



ANNUAL REPORT 2014

BUILDING A BRIDGE TO PROSPERITY

www.pawtucketfoundation.org

P.O. Box 515, Pawtucket RI 02862 | 401.725.4400 | info@pawtucketfoundation.org



IN THIS ANNUAL REPORT...

- 1 Board of Directors
- 2 Co-Chairs' Report
- 3 Events Spotlight
- 5 Accomplishments
- 7 Financial Highlights
- 8 Community Impacts
- 9 Investors in the Community

Co-Chairs

Daniel J. Sullivan, Jr.
CEO & President
Collette

Kevin P. Tracy
Sr. Vice President,
Bank of America Merrill Lynch

Officers

VICE CHAIRS:

Mark J. House
Resource Controls

Michele L. Roberts
Bristol County Savings Bank

TREASURER:

David A. Fontaine
Marcum LLP

SECRETARY:

Michael F. Horan, Esq.



Pawtucket Foundation Staff

Rachel Brask Hutchinson | Joe Sandmann | Christine Sullivan | Aaron Hertzberg
Communication Design Specialist | Program Coordinator | Development Director | Executive Director

BOARD OF DIRECTORS

- **Kathleen A. Bartels**, LLB Architects
- **Peter E. Baziotis, MD**, EB Properties & Anesthesia Care
- **Robert D. Billington, Ed.D.**, Blackstone Valley Tourism Council
- **Donna L. Brady**, Citizens Bank
- **Vincent S. Ceglie**, Blackstone Valley Community Action Program
- **Suzanne C. Courtemanche**, Vanasse Hangen Brustlin
- **Eric J. DaRosa**, North East Knitting
- **Arthur J. DeBlois III**, Tameracq Partners, Inc.
- **Eric Delin**, Delin Design
- **Patti DiCenso**, Pawtucket School Department
- **Linda T. Dewing**, Places & Spaces Realty
- **Mayor James A. Diossa***, City Of Central Falls
- **Gary E. Furtado**, Navigant Credit Union
- **Michael R. Gazdacko**, Urban Smart Growth
- **Mayor Donald R. Grebien***, City of Pawtucket
- **John C. Gregory**, Northern RI Chamber of Commerce
- **Michael E. Hogan**, TD Wealth
- **James R. Hoyt, Jr.**, Boys & Girls Club of Pawtucket
- **William J. Hunt**, Shove Insurance Company
- **Dolph Johnson**, Hasbro, Inc.
- **Karl A. Kozak**, Pawtucket Credit Union
- **Esselton T. McNulty**, YMCA of Pawtucket
- **Morris Nathanson**, Morris Nathanson Design, Inc.
- **Ross Nelson**, Cox Communications
- **John J. Partridge, Esq.**, Partridge Snow & Hahn, LLP
- **Albert J. Pereira**, Narragansett Bay Insurance Company
- **Antonio J. Pires**, City of Pawtucket
- **Lori J. Spangler**, National Grid
- **Lori Urso**, Slater Mill
- **Nancy Whit**, Pawtucket Citizens Development Corporation
- **Matt White**, Pawtucket Red Sox
- **Louis Yip**, Tai-O

*Ex-Officio Member

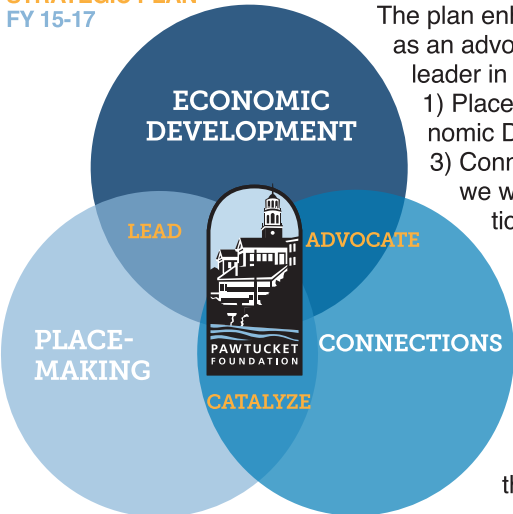
CO-CHAIRS' REPORT

New Strategic Plan to Guide Next Steps

2014 marked the completion of our first strategic plan, enVision Pawtucket. Over the course of the plan, we completed the River Corridor Development Plan, reshaped our approach to “Main Street” and advanced preliminary engineering for a commuter rail stop, one-way to two-way traffic conversions and downtown zoning improvements.

Our hard work and public-private partnerships are taking root. Activity at key properties, including 175 Main Street, the Gately and Feldman

The Pawtucket Foundation
STRATEGIC PLAN
FY 15-17



Buildings, along Division Street and in the Armory Arts District and M Residential Complex demonstrate viability and reaffirm the Pawtucket Foundation’s focus on the downtown, riverfront and transportation gateways. The public sector is responding with major infrastructure investments at Festival Pier, a new Riverfront Park behind City Hall, the iconic I-95 Bridge and plans for road, bike and pedestrian upgrades.

In an effort to build on this energy, the Pawtucket Foundation has released a new FY15-17 Strategic Plan. The plan enhances our role as an advocate, catalyst and

leader in three key areas:

- 1) Placemaking, 2) Economic Development, and
- 3) Connections. While

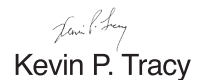
we will continue to participate in cultivating new planning efforts, priority is given to implementation and ensuring that we help realize the shared community vision that has so clearly

been defined over the life of our organization.

We have already begun implementation of the plan. We have empowered and joined partnerships to build a pocket park, clean up gateways, define neighborhoods, reshape overpasses, enhance economic development resources, showcase opportunities and track redevelopment progress. In the years to come, we expect continued property and infrastructure development. Priorities include completion of the commuter rail station, bike paths and infill development that will increase residential density and commercial activity.

The generosity of our members, the dedication of our staff and the support of our board and volunteers strengthen these efforts. With your continued commitment our vision will become reality.


Daniel J. Sullivan, Jr.


Kevin P. Tracy

EVENTS SPOTLIGHT



Over 60 attended. \$10,000 Endowment Challenge Matched. Mayor Diossa named to board. New board members inducted. Looking forward: Strategic Plan in motion. Honorees announced.

13TH ANNUAL MEETING

Over 350 attended. Heritage Award: Dana Newbrook, ai Designs. Persons of the Year: Mike Tamburro & Lou Schwechheimer, Pawtucket RedSox. Special Distinction: Ricardo & Bernadette Pitts-Wiley, Mixed Magic Theatre.



11TH ANNUAL AWARDS CELEBRATION



200+ hours. Over
50 volunteers. **7**
project sites. Used
124 shovels,
rakes, and brooms.
Transformed **2.5**
miles of streetscape.
Picked up and
landscaped
5,105 square yards.

PAWTUCKET PROUD DAY 2014

“This is an event where we can all – both artists and art appreciators – show our support and commitment to local artists and to the growing Pawtucket arts scene.”

– Christine Sullivan, Director of Development, Pawtucket Foundation

Mark A. Perry wins \$1,000 Award for his sculpture, “The Doctor.”



PAWTUCKET FOUNDATION PRIZE EXHIBITION



Pawtucket Foundation and Foolproof Brewing Company partnered for the 2nd Annual Augtoberfest. The event featured live music, food trucks, and opportunities for guests to “chalk” about why they love Pawtucket on the traveling Chalk Wall.

FOUNDATION @FOOLPROOF BREWERY'S AUGTOBERFEST 4

ACCOMPLISHMENTS

The Pawtucket Foundation in Action

PROJECT HIGHLIGHTS

Unveiled the FY15-17 Strategic Plan increasing focus on Placemaking, Economic Development and Connections.



Released a comprehensive Riverfront Corridor Development Plan to guide redevelopment in Pawtucket and Central Falls.

Accompanied Mayor Grebien on outreach visits to 8 local businesses.



Hosted Ethan Kent of Project for Public Spaces for a presentation on Placemaking and community participation in redevelopment.

Co-led Opportunity Space, a multi-jurisdictional partnership to map 2,558 publicly owned properties for analysis, input and possible disposition.

Advocated implementation of the Downtown Design Plan, including two-way traffic conversions on Broadway and Main Street, and enhanced pedestrian and bike amenities.

Received a \$40,000 grant in partnership with the Armory Arts District to install banners and enhance key gateways.

Blackstone Valley Bikeway: worked with stakeholders to advise alignment through Pawtucket and lay first section of off-road path behind City Hall.

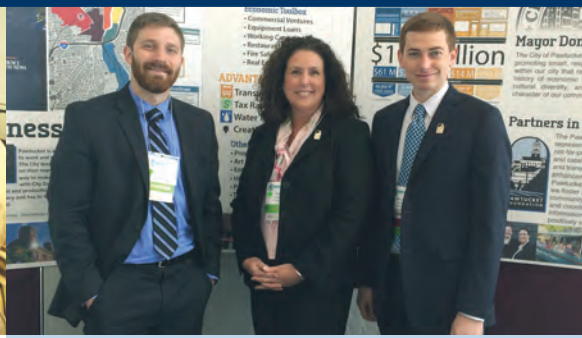
Led a Main Street partnership with the Anchor Recovery Center to cleanup streetscapes and care for trees in Downtown Pawtucket.

Commuter Rail: Served on technical advisory committee for preliminary engineering for MBTA commuter rail stop in Pawtucket/Central Falls.

Increased distribution network to 20,485 web users and 2,400+ subscribers across Pawtucket Foundation and Experience Pawtucket platforms.

RIPTA: Succeeded in advocating for bus connections to the S. Attleboro Commuter Rail Station and pushed for long-term plans to incorporate bus connections to the proposed Pawtucket/Central Falls Commuter Rail Station.

PARTNERSHIPS



ARMORY ARTS DISTRICT

- Served on the Armory Arts District Study Group to **advance economic viability** and physical character of the neighborhood.
- **Sponsored the Pawtucket Arts Marketplace**, a showcase of fine art and contemporary crafts for sale at the Pawtucket Arts Festival

BLACKSTONE VALLEY

- **Board member** on the Blackstone Valley National Heritage Corridor
- **Board member**, Northern RI Chamber of Commerce

BLACKSTONE VALLEY TOURISM COUNCIL

- **Co-managed Landscape Improvement Program** to maintain and plant cherry trees in Pawtucket/Central Falls.
- **Co-planned and supported** the 6th Annual Rhode Island Cherry Blossom Festival and Princess Crowning.

CITIES OF PAWTUCKET & CENTRAL FALLS

- **Served** on the Pawtucket Business Development Corporation to help finance local businesses.
- **Advocated for updates** to the Pawtucket Food Truck ordinance.
- **Served on the technical advisory committees** for the disposition of 45 Division Street, master planning of the Town Landing/National Grid, Complete Streets, Mayor's Economic Development Taskforce, Mayor's Commission on Arts & Culture, Developers Working Group, the Overpass Art NEA Grant and Roosevelt Avenue Planning.

CONFERENCES & ASSOCIATIONS

- **Presented** on 2 panels at the 2014 Grow Smart RI Power of Place Summit; 2014 ICSC New England Idea Exchange; and Rhode Island Chapter of the Urban Land Institute.
- **Member:** Rhode Island Chapter of the American Planning Association, Pawtucket Rotary and International Council of Shopping Centers

PAWTUCKET CITIZENS DEVELOPMENT CORPORATION

- **Supported projects** to build quality affordable housing and increase residential density in the downtown and riverfront corridor.

STATE OF RHODE ISLAND

- **Advocated for urban communities** to the Rhode Island Commerce Corporation and Statewide Planning.
- **Gathered data and testified** for the reinstatement of the RI State Historic Tax Credit program.

UNIVERSITY PARTNERSHIPS

- **Hosted a Brown intern** with the Mayor's Commission on Arts & Culture to map public art in Pawtucket.
- **Partnered to engage 3 courses from Roger Williams University** in analysis of the Conant Thread Complex and transit-oriented development opportunities around the proposed Pawtucket/Central Falls commuter rail station.

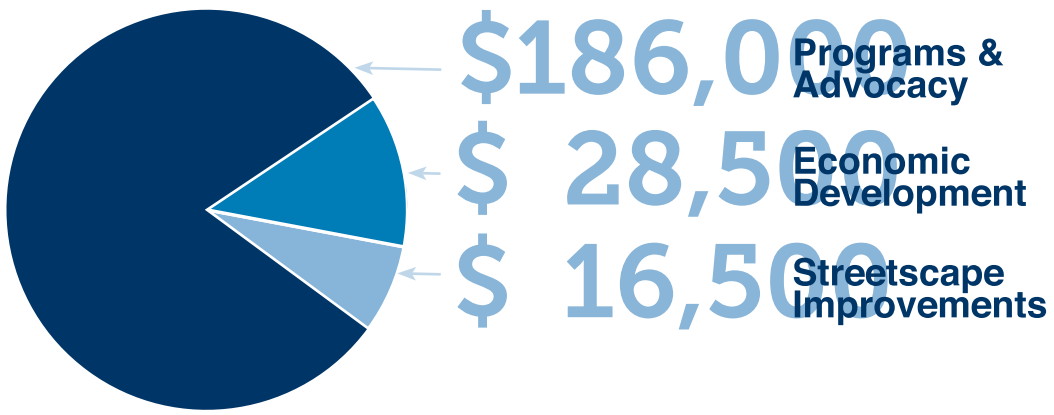


FY14 FINANCIAL HIGHLIGHTS

Investing in the Community

\$ 231,000

Advocating and catalyzing downtown, riverfront and transportation gateway enhancements



\$ 26,885

Endowment Fund Net Gain - exceeded challenge to match \$10,000 anonymous contribution

COMMUNITY IMPACTS

Focused Efforts, Tangible Project Results

Placemaking

The Pawtucket Pocket Park began as a 2014 Pawtucket Proud Day project. The improved green space in the heart of downtown serves as a pedestrian refuge and a source of pride in the community. Utilizing Placemaking techniques, an interactive chalkwall was incorporated into the design.



PARTNERS: City of Pawtucket, Mayor's Commission on Arts and Culture, Northern Plaza, Pawtucket Times

SBA Seminars

The partnership, initiated by the Pawtucket Foundation, attracted 224 registrants for business development seminars and connected businesses and entrepreneurs to locally available resources. Eleven seminars were held, totaling 23 hours of professional training.



PARTNERS: Center for Women and Enterprise, City of Pawtucket, NRI Chamber of Commerce, SCORE, TD Bank, US Small Business Administration

Economic Development Marketing

The Pawtucket Foundation, the City of Pawtucket and PBDC formed a partnership to produce marketing materials for Pawtucket. The Pawtucket Foundation produced informational packets for potential developers and businesses. The partnership also produced a supplement for PBN that was distributed to thousands and a trade-show display for use at conferences and events.



PARTNERS: City of Pawtucket, Pawtucket Business Development Corporation

INVESTORS IN THE COMMUNITY

Members & Contributors 2014

MEMBERS

Founder

\$10,000 +
Bristol County Savings Bank
Citizens
Collette
Hasbro, Inc.
Pawtucket Credit Union

Partner

\$5,000 - \$9,999
Amica Mutual Insurance
Company
Cox Communications
Memorial Hospital of RI
Navigant Credit Union

Trustee

\$2,500 - \$4,999
Bank of America Merrill Lynch
Blackstone Valley Community
Action Program
Hope Global
John J. McHale & Sons, Inc.
Narragansett Bay Insurance
Company
National Grid
Pawtucket Red Sox
Teknor Apex Company
Tunstall
YMCA of Pawtucket

Incorporator

\$1,000 - \$2,499
AAA Southern New England
Am-Source LLC
M. Barboza & Sons Roofing Co., Inc.
Blackstone Valley Tourism
Council
Boys & Girls Club of Pawtucket
Crown Collision
Delin Design, Inc.
Dunkin Donuts, Inc.—East Street
Dupuis Oil
EB Properties

Michael F. Horan
Hord Crystal Corporation
Memorial Hospital
Morin Fine Catering
New England Linen Supply
North East Knitting, Inc.
Pascale Service Corporation
Resource Controls
Santander
Tai-O
Tracey Gear & Precision Shaft
Twin River
Vanasse Hangen Brustlin

Friend

\$300 - \$999
407 Realty LLC
Anonymus
Beretta Realty Company
Berger Recycling
Blackstone Pawtucket
Blackstone Valley Sports LLC
Embolden
Excellent Coffee
Freedom National Bank
Foolproof Brewing Company
Gateway Healthcare, Inc.
Gencorp Insurance Group
Gordon R. Archibald, Inc.
Hayes & Sherry Ltd.
Klibanoff Eye Associates Ltd.
Liberty International
Marcum, LLP
Morris Nathanson Design, Inc.
North American Industries, Inc.
NRICC
Pawtucket Citizens
Development Corporation
Places & Spaces Realty
Providence Metallizing
Public Archeological Laboratory,
Inc.
Sage Environmental
Saint Raphael Academy
Shove Insurance
Spumoni's Restaurant

CONTRIBUTORS

General Contributions

Anonymus
Ayoub Engineering, Inc.
International Paving
Corporation
Lawrence Platt
LLB Architects

NEPTCO
TD Charitable Foundation

Gifts in Kind

Ahlers Designs
ATC Promotions
ATR Treehouse
Blackstone Valley Community
Action Program
Blackstone Valley Visitors
Center
Bristol County Savings Bank
Central Nurseries
Citizens Ice Company
City of Pawtucket
ClassSick Custom
Collette
Exchange Street Café
Karen Ditto
Dunkin Donuts – East Street
Hasbro, Inc.
Mr. & Mrs. Michael Horan
National Grid
Jesse Nemerofsky Photography
Liberty International
Lolita Designs
Shelly Marcoccio
Russell Morin Fine Catering
Ocean State Printers
Opportunity Space
Regina Partridge
Pawtucket Armory Arts Center
Pawtucket Citizens
Development Corporation
Pawtucket Credit Union
Pawtucket Redevelopment
Authority
Plouffe's Cup'n' Saucer
Quality Rental
Michele Roberts
Samaritans of RI
Sherwin Williams
Slater Mill
Kathleen Sullivan
The Home Depot
The Times
WholeFoods Market

EVENT SPONSORS

Awards Celebration

Lead Sponsors \$5,000

Bristol County Savings Bank
Delin Design, Inc.
Hasbro, Inc.

Event Sponsors \$2,500

Bank of America Merrill Lynch
Collette
Cox
McLaughlin & Moran, Inc.
Navigant Credit Union
Partridge Snow & Hahn, LLP
Pawtucket Credit Union
Pawtucket Red Sox

Table Sponsors \$1,500

Blackstone Valley Community
Action Program
Boys & Girls Club of Pawtucket
Citizens Bank
Horan Law
LLB Architects
Memorial Hospital of RI
Narragansett Bay Insurance
Company
Pawtucket Red Sox
Slater Mill
Tai-O
TEN31 Productions
TD Bank
TPA/Shove Insurance
Tunstall
Vanasse Hangen Brustlin
YMCA of Pawtucket

Gold Ticket Sponsor \$250 +

Arthur DeBlois
John Gregory
Mark Haskins
Lawrence Platt
Pablo Rodriguez
Neil Steinberg
Kenneth Zuckerman

Pawtucket Proud Day 2014

Dr. Peter Baziotis
Bristol County Savings Bank
Butler & Messier, Inc.
Collette
Delin Design, Inc.
Dunkin Donuts – Mineral Spring
Ave.
Kenneth Gould
Joan Hausrath
Hord Crystal Corporation
Pamela Hughes
National Grid
Public Archeological Laboratory,
Inc.
Tunstall



MISSION

what we do and how we do it

The Pawtucket Foundation represents the business and not-for-profit sector as an advocate and catalyst for downtown, riverfront and transportation gateway enhancements within the City of Pawtucket. As civic entrepreneurs, we foster a vision of the community's future by mobilizing and coordinating research, information, talent and resources to positively impact the City.

VISION STATEMENT

impact & desired future state

We envision an attractive, sustainable and livable place with the Blackstone River as the centerpiece of a vibrant, distinctive community. Modernized infrastructure and a 21st-century multi-modal transportation network serve a thriving business community, a diverse resident population and active visitor market.

CORE VALUES

our culture

Collaboration
Creativity
Vision
Sustainability
Quality of Place
Excellence



www.pawtucketfoundation.org

P.O. Box 515, Pawtucket RI 02862 | 401.725.4400 | info@pawtucketfoundation.org

